

SECTIONAL ELEVATION A-A

PLANT FAVA BEANS AS WINTER CROP OR GREEN MANURE TO FOLLOW TOMATOES.



INTERPLANT:
A FEW MARIGOLDS,
SOME SWEET
BASIL (TO COOK
WITH TOMATOES),
AND DWARF
NASTURTIUMS.

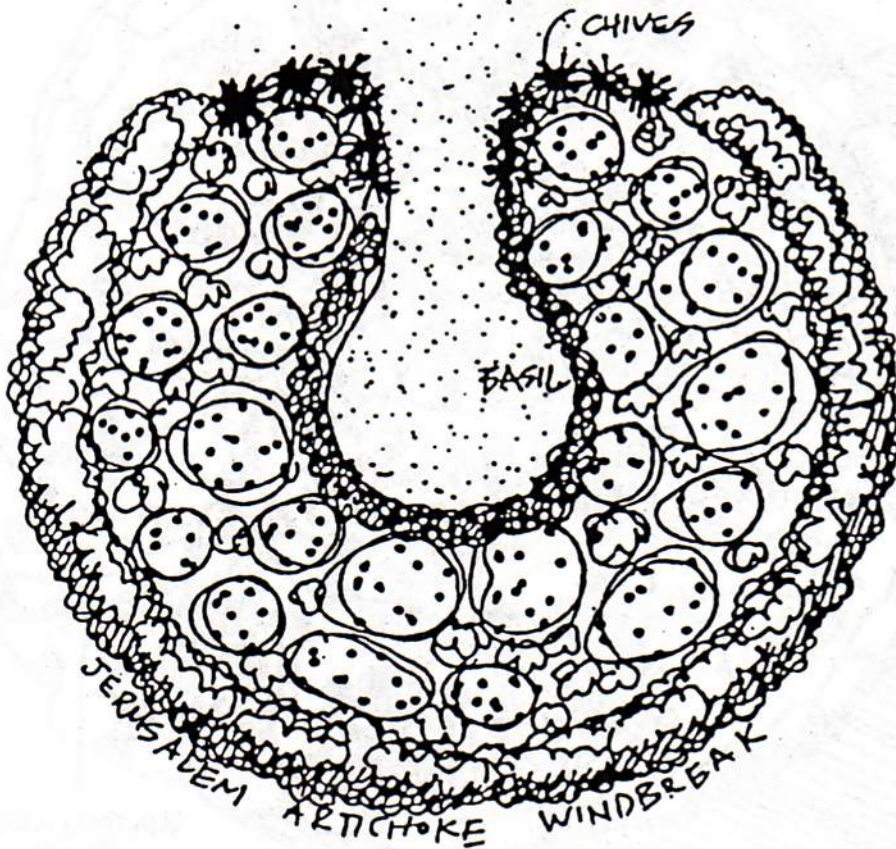


FIGURE 5.3 Raised keyhole bed, densely planted, with a hardy sunflower windbreak. Such beds suit tomatoes if staked or trellised.